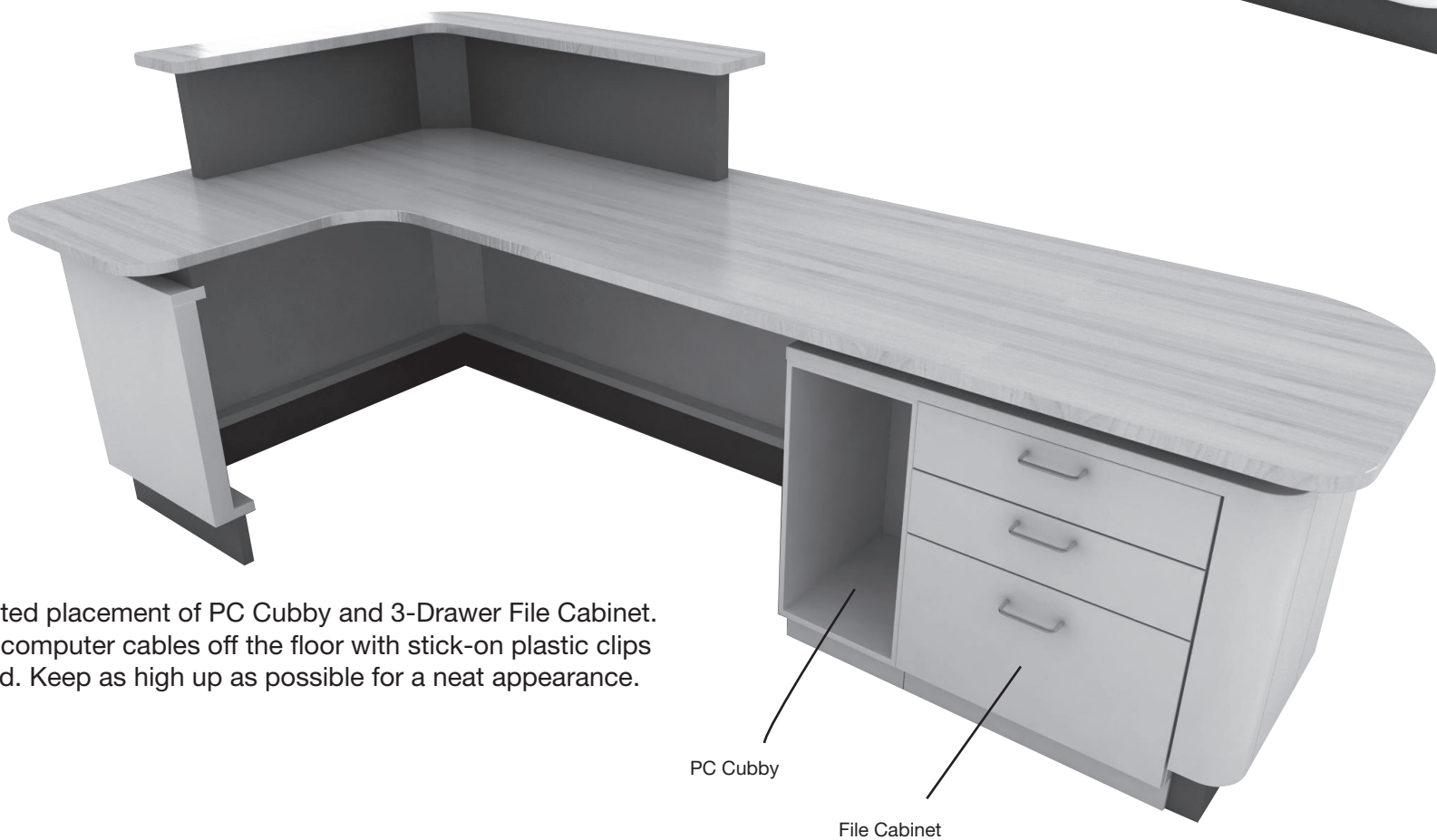




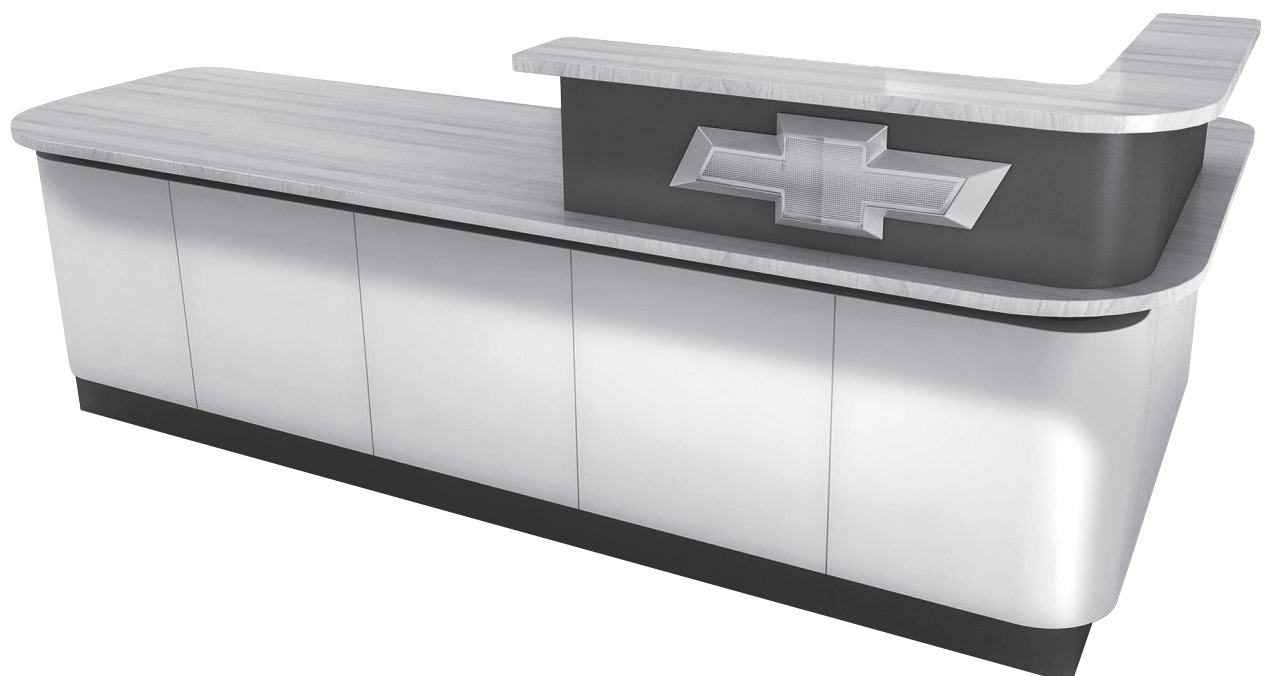
Chevrolet Reception Desk and Back Wall Cabinet Installation Guidelines

Suggested placement of the Reception Desk relative to the Back Wall Cabinet.
Adjust leg levelers on each unit as needed.



Suggested placement of PC Cubby and 3-Drawer File Cabinet.
Secure computer cables off the floor with stick-on plastic clips provided. Keep as high up as possible for a neat appearance.

Chevrolet Logo (purchased separately) can be mounted here if the Reception Desk is purchased without a Back Wall Cabinet.



Call DCI Marketing at 800-766-5660 with any questions.